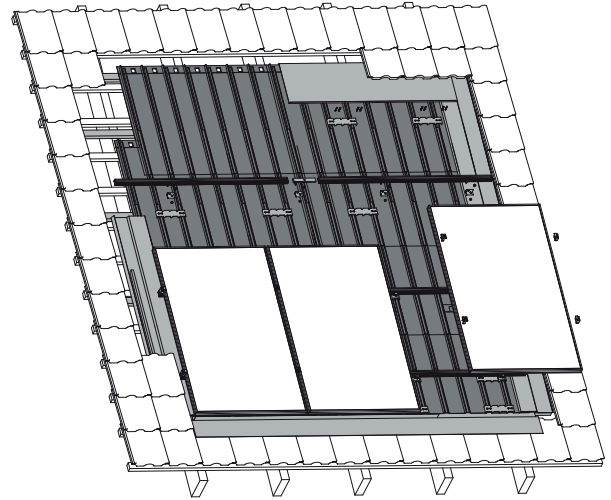


# System Datasheet

## ISSE



### General

System	Semi-integrated PV-mounting system
Content	HDPE roof covering, anchors, rails, flashing, module clamps, sealing collars, fastening material
System warranty	10 years
Application area	Pitched roof (except hydrogen sulfide exposition)
Roof covering	Tiles
Roof slope	min. 5°, max. 45°

### System properties

Material	Stainless steel, Aluminium, HDPE
Module tilt	Roof parallel
Roof coverage	Partial and full coverage possible

### Modules

Type	Framed PV-Module, frame height between 30 and 50 mm
Orientation	Landscape or Portrait
Dimensions	Length: unlimited, Width: unlimited

### Certifications

MCS012	IK0197/01
Fire safety	MCS EXT.S.AA, B roof t1, B roof t3, ENV1187, EN13501-5
TÜV	ID1111212485 according to 2PFG
Water tightness	MFPA 5.1/10-535 according to prEN 15601

### Services

PV layout	Provided by Renusol
-----------	---------------------